



Local Education &
Activities Foundation
For St. Cloud Area School District 742

Annual Report 2020

George and Shirley Torrey: A Lasting Legacy in Support of Public Education



Article on page 11

Growing a stronger community through academics, activities, arts and athletics.

As the education foundation for District 742, LEAF provides resources to help faculty and staff do what they can't do alone. Financial support to LEAF helps offer all our kids the opportunities and well-rounded education they need and deserve to succeed. LEAF supports excellence and opportunity in all District 742 academic, arts and athletic activities and programs.

Cover photo

George and Shirley Torrey:

A Lasting Legacy in Support of Public Education.

Article on page 11



Elizabeth K. Reisinger
President, LEAF
Board of Directors

Dear Friends of LEAF:

By the time you read this, 2020 will be complete. It was an extraordinary year, full of grief, confusion, and chaos, but also hope, joy and innovation. At LEAF, the pandemic and our necessary response dominated our work for much of 2020, pivoting our priorities and original goals. LEAF's agility proved once again to be an asset, as we could move quickly to support the changing needs of District 742. As always, we are grateful to our donors, our community volunteers and our many partners at District 742.

One of our primary functions every year is grants to District 742 programs. As you'll see in more detail in the following pages, the pandemic necessitated that LEAF tweaked the grant process, and, instead we connected with District 742 staff eager to supplement their distance learning programs. A similar process occurred this fall, as we funded emergency needs for all programs, whether they were academic or activities. The staff of District 742 continued to innovate, and LEAF supported programs to keep students engaged in online learning, supplemental needs for activities and provided extra dollars for classroom supplies. In October, our LEAF Learning Renaissance fundraiser went digital and raised over \$39,000, of which \$15,834 went directly to District 742 to support distance learning technologies, such as Chromebooks and WiFi hot spots.

This year, we mourned the death of many beloved community members. In June, we lost a true legend, George Torrey. A longtime supporter of public education in District 742, George and Shirley Torrey left LEAF a gift of \$400,000 for the Activities Endowment. We are eternally grateful to the Torrey family for their generosity. Read more about the Torrey's gift on page 11.

The COVID-19 pandemic halted many things, but it didn't hinder innovation. In 2019, LEAF, guided by St. Cloud State University Professor Melissa Hansik-Brill, piloted a unique math literacy program for preschool students. Named PAKCAT, or Partners and Kids Counting Alot Together, the program builds off of the successful literacy program PAKRAT, or Partners And Kids Reading Alot Together. This year, the Morgan Family Foundation awarded LEAF a \$41,000 grant to expand the PAKCAT program in 2021! These funds will ensure that the pioneering curriculum will serve elementary students for years to come.

Speaking of PAKRAT, getting reading materials to children this year, particularly during the late spring and summer, and to students in underserved communities, proved challenging. But through the hard work of several District 742 staffers and LEAF Board member Sara Martini, the PAKRAT Summer Roll n' Read Bus delivered books and math packets to nearly 1,000 students. The initiative was so successful that we ran out of math packets and nearly ran out of books in the one-week program!

We're proud of our year, despite its unpredictability, and are well-prepared to meet more challenges in 2021. But none of it would be possible without our donors, supporters and volunteers. Your generosity to LEAF helps support the 10,000 students in District 742. We are very, very grateful for all of you.

Thank you! Stay healthy, stay safe. Here's to a successful 2021!

Summertime PAKRAT/PAKCAT Program



LEAF continues to do everything possible to support a quality educational experience for all students – even during the pandemic of 2020! The effort

to provide a summertime PAKRAT/PAKCAT Read & Roll program is just one example.

In June, LEAF applied for and received a COVID-19 Response Grant from the CMCF. The purpose of this grant was to support our annual summertime PAKRAT/PAKCAT Program, which delivers quality reading and math literacy books/materials to students throughout District 742. In addition, LEAF received permission from Stearns Bank to repurpose a \$5,000 gift Stearns Bank had given LEAF in late 2019 in order to support this program.

In the summer of 2020, this program became even more challenging than usual due to the pandemic, which prevented us from checking out books & math materials each week with students bringing them back the next week throughout the summertime. Due to the pandemic, we had to find a way to deliver quality reading and math literacy materials which the students could be allowed to keep. With the CMCF grant, Stearns Bank gift, and other individual donations, LEAF was able to run a 1-week program that served the entire school district and allowed students to choose two books and a packet of age-appropriate math materials. It was a GREAT success!

After purchasing books and math materials, Melissa Hanzek-Brill and students from SCSU helped arrange the math packets by grade level. We were then ready for distribution during the week of July 20. Sara Martini, the PAKRAT coordinator for District

742 worked with District 742 Transportation Services to set up routes each day that covered the entire school district.

The routes were coordinated with the Yes-Network free lunch deliveries whenever possible in order to connect with the largest number of students.



We finished the 4th day and final route for the PAKRAT/PAKCAT summertime bus on July 23. It was a great success! As you can see in the picture of the inside of the bus we almost ran out of books - and we completely ran out of our 600 math packets on Wednesday! A total of 887 students, along with their parents, visited the bus.



We were able to reach 887 children during the week on our 4 book routes. All of the children, parents and even grandparents were so excited and thankful for the opportunity to receive some new books and a bag with math activities. It was a huge success and we want to thank all of our staff who

volunteered to help. Thanks so much to Dawn Schoborg, Shelley Rolfe, Andrea Telega, Amy Jensen, and Beth Lovdahl. Sara Martini and Melissa Hanzek-Brill were the book/math program coordinators and rode the bus each day to help deliver materials. Carrie Johnson, District 742 Transportation Director, was very supportive in setting up bus routes, and bus driver Christopher deserves special recognition!

It was a fantastic week!

LEAF is involved with a number of initiatives throughout the school year, designed to support the education of students in our community. There is none more valuable than developing good reading and math skills through the PAKRAT and PAKCAT programs! Thanks to the CMCF and Stearns Bank for your significant contribution to that effort!



Generous Major Gifts Help LEAF Continue to Grow and Impact Education

During 2020, LEAF was the beneficiary of, and grateful for, MANY individual donations from citizens who value education. In addition, several larger gifts have allowed us to continue to grow our impact. In addition to the Torrey Estate gift, mentioned elsewhere in this Report, gifts/grants of \$5,000 or more are listed below:

Morgan Family Foundation - \$46,500

Morgan Family Foundation support for PAKCAT Program expansion and other LEAF initiatives

Peggy Carlson and Chuck Nielsen (Retired Educators) - \$14,400

Support for LEAF Homeless Fund, Participation Fund, Bodvarsson Scholarship as well as to build a LEAF Legacy Fund

Central Minnesota Community Foundation - \$12,712

Community COVID-19 Response grants for LEAF Homeless Student Services Fund and PAKRAT program

Mike and Karel Helgeson - \$12,500

Support for Academic and Activities programs as well as LEAF Homeless Fund

Paul and Joanne Dorsher - \$10,509

Matching Gift for the LEAF Learning Renaissance Fund-a-Need Auction and Learning Renaissance fundraiser.

Dr. John and Sue Weitz - \$10,406

Split between the LEAF Academic and Student Activities Funds

St. Cloud City Block Grant - \$5,000

Grant to provide crisis shelter in motels for homeless District 742 youth

Suzanne and James Kelleher - \$5,000

Grant to supply Chromebooks for middle school students

St. Cloud Area Golden Gloves, Inc - \$5,000

Support for the LEAF Adopt a Classroom Project

United Way of Central Minnesota - \$5,000

Community COVID-19 Response grant for LEAF Homeless Student Services Fund

Any donor who would like to impact education in District 742 for years to come through a LEAF Legacy Fund, please see the Legacy Fund explanation later in this Report.

RETIRED EDUCATORS *support education through LEAF*

The District 742 Retired Educators' Club is an annual fundraising effort by LEAF. Begun in 2011, retired educators from District 742 have contributed **\$66,765** to the Retired Educators Fund as of December 31, 2020! This fund will allow LEAF to give an extra \$3,338 in academic and activities grants in 2021! The number of grants made in the name of our retired educators will continue to grow as the fund grows. LEAF honors these educators who already have helped make a difference in the lives of our students through their years of service and now are supporting something that will have an ongoing impact on the educational opportunities students receive in District 742.

The members of the ISD 742 Retired Educators Club are listed on the LEAF web page, www.leaf742.org.

SUSTAINING DONORS

Sustaining donors provide an ongoing support of the LEAF mission by making arrangements to give monthly through the *Recurring Donor Program*. A recurring or sustaining donation can be set up easily via the LEAF web page. In 2020, the following donors gave generously to LEAF as sustaining/recurring donors:

- Peggy Carlson & Chuck Nielsen
- Rosana Backen
- Shannon Essler & Rich Petty
- Kristin Hatten
- David Hintgen
- Patrick & Cathy Mullen
- Curtis & Lori Johnson

Our thanks to these generous sustaining donors! Please visit the LEAF web page or contact the LEAF executive director to set up a recurring donation.

Employee Payroll Deduction Program

In addition to our District 742 retired educators, district staff can contribute to LEAF via payroll deduction.

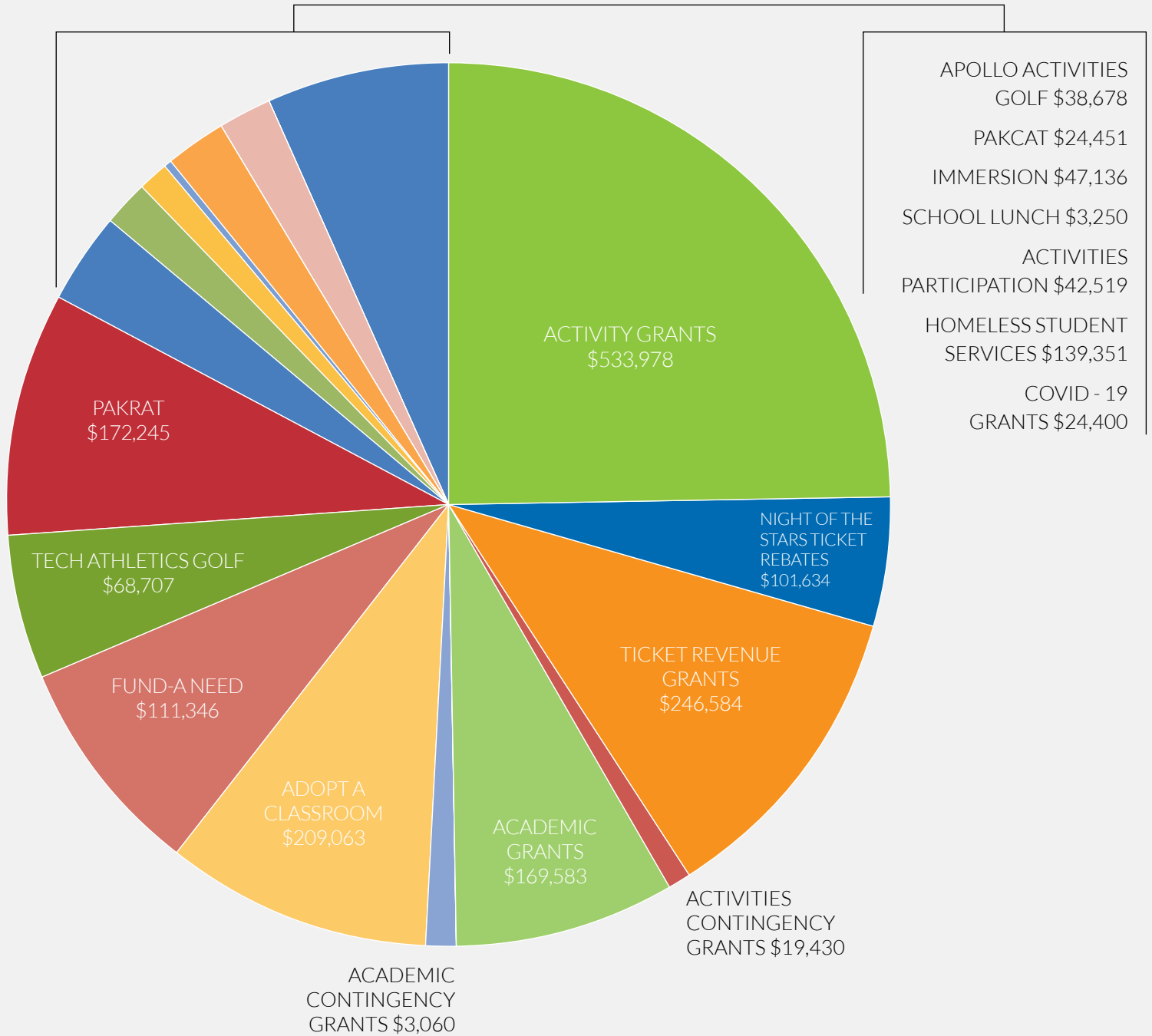
During 2020, the following staff gave generously to LEAF through the payroll deduction process:

- *Brian Nutter*
- *Joy Ottem*
- *Cynthia Simson*
- *Thomas Stoffel*
- *Lisa Wannabo*

Our thanks to these generous staff members for going "above and beyond" their duties in support of students in District 742!

Growing Financial Impact: LEAF passes \$2 million in grants!

Thanks to the donors whose support of public education has helped LEAF steadily expand our impact. In 2020, LEAF passed the \$2 million in grants mark. As of December 31, 2020, LEAF has made grants totaling \$2,144,118 to a variety of District programs. The chart below shows the programs and initiatives that LEAF has supported since 1997.



\$2,144,118
TO STUDENT EDUCATION AND ACTIVITIES

adopt a classroom

The Adopt-A-Classroom project connects businesses and individuals to specific classrooms to help provide needed supplies that teachers and families usually have to purchase.

Each fall, businesses or individuals can “adopt” a classroom in one of our District 742 schools of their choice by making a tax-deductible \$250 contribution for the needed supplies. Parents and teachers spend hundreds of dollars to provide basic supplies for classroom use. From the ordinary, like permanent markers, pencils and notebooks to the more unique like sheet music, science kits, dry ice and mice for snake food, our teachers and parents of students spend their own money to provide a quality educational experience.

While some classroom teachers or families can afford these expenditures, many cannot. LEAF wants to help all students have the advantage of a quality classroom experience.

Businesses or individuals can choose to adopt a specific classroom at a specific school or make a \$250 donation to LEAF and allow LEAF to choose a classroom. LEAF will then inform the donor of the classroom they have adopted. The business or individual donor will receive a Certificate of Adoption that identifies the classroom they have adopted.



IN 2020, OVER **\$32,000** WAS RAISED AND **130 CLASSROOMS** WERE ADOPTED! SINCE THE PROGRAM BEGAN IN 2011, \$209,513 HAS BEEN RAISED AND 838 CLASSROOMS ADOPTED! **THANKS TO OUR MANY DONORS TO ADOPT A CLASSROOM!**

2020 ADOPT A CLASSROOM DONORS

Don Anderson State Farm Insurance
Darleen Backes
Lisa Bale
Susanne Barkalow
Mark & Angie Benson/Benson Funeral Home
Ginny & Jim Bisek
Nancy & Kevin Brennan
Maggie Brossoit
Peggy Carlson & Chuck Nielsen
Mary Croat
CWMF Corporation
Al Dahlgren - Once Upon a Child
Michael & Kendra Dando
Dwayne & Cindy Dockendorf
Fraternal Order of the Eagles Women's Auxiliary
Eckblad-Williams Foundation
Don & Diane Farleo
Bob & Elizabeth Feigh

Jill Fox
Robert Gardetto, Westview Dentistry P.A.
Tanya Gertz & Faust/William Gertz
St. Cloud Golden Gloves Boxing, Inc
Art & Barb Grachek
Kathryne & Paul Gray
Heartland Glass Co, Inc
Don Helgeson & Sue Sheppard
Sandra Henley
Dana & Mike Hoffman
Joyce & Dennis Hummel
IPM International
The Amy Jensen Family
Lori & Curtis Johnson
Kiwanis Club
Bradley Kothman
Michael & Janna Lafontaine
Scott & Dorie Larison
LEAF
Jamie LeBree
Vern & Mary Ann Leitch

Clyde & Connie Lewandowski
Life Church
Gary & Jane Marsden
Doris Matter
Janet & Paige McConkey
Steven McCullar
MCI Carpet One
Steve & Melanie Minkler
Minnwest Bank
Bruce Mohs
Joe Mullen
Pat & Cathy Mullen
Don & Nancy Oestreich
James O'Neill
St. Cloud Morning Optimist Club
Jim & Bev Pehler
Peters Body Shop
Doug & Jerilyn Petersen
Laura & Jeff Pfannenstien
Todd Pieper & Heather Pieper-Olson
Michael & Janet Reagan

Teresa Reis & Ted Takala
Virginia Riser
Rosemary & Frank Roehl
Michelle & Steve Sauer
Lynn & William Schnettler
Jeff & Linda Skumautz
St. Cloud Refrigeration
Tom Stavros
Charlotte Stephens
Carolyn Himanga Stewart
Dave & Sonja Strutz
Phil & Nancy Sturlaugson
Kim Thooft
Ione & Jerry Torberg
Diane Tuff & Murdoch Johnson -UpFront Consulting
Douglas Unglaub
Jerry & Connie Von Korff
Kirsten & Reuben Wagenius
Scott Wilcox
Tara Winchester

Legacy Funds

Gifts of \$25,000 or more given over a period of up to 5 years allow donors to support specific activities or programs and are given in the donor's name. Below are named legacy funds through 2020.

[George & Shirley Torrey Fund \(Student Activities\)](#)
[Barclay & Janet Carriar Fund \(Academic and Activities\)](#)
[Michael Faber Family Fund \(Academics & Activities\)](#)
[Retired Educators Fund \(Academics & Activities\)](#)
[Apollo High School Activities Fund \(Apollo Activities\)](#)
[South Junior High Activities Fund \(South Activities\)](#)
[Tech High School Athletics Fund \(Tech Athletics\)](#)

[Tech High School Football Fund \(Tech Football\)](#)
[District 742 Chinese & Spanish Immersion Program Fund](#)
[District 742 Homeless Student Services Fund](#)
[Phillip Schmitz Memorial Scholarship Fund](#)
[Peggy Carlson & Chuck Nielsen \(Homeless Student Services and Activities Participation Focus\)](#)
[Hans Bodvarsson Memorial Scholarship Fund](#)

LEAF Benefactors

Like George & Shirley Torrey, LEAF benefactors indicate the intention for a provision for a future gift to LEAF through their will, trust, retirement or life insurance plan or a charitable gift annuity or charitable remainder trust. Individuals interest in becoming LEAF benefactors should contact the LEAF executive director at 320-253-5780 or bruce@leaf742.org.

LEAF Supports Students Through A Variety Of Funds

The LEAF endowment fund provides supplemental funding for academics, activities, arts and athletics. In addition, LEAF provides many ways to support student activities and academic programming.

ACTIVITY PARTICIPATION FUND

The Activities Participation Fund helps underprivileged students with expenses so that they can participate in the great extracurricular programs offered by District 742.

ADOPT-A-CLASSROOM

The Adopt-A-Classroom project connects businesses and supplies with tax-deductible \$250 contributions.

EVENT SPONSORSHIPS

Talk about a win-win opportunity! Sponsors of LEAF events help defray costs and assure the financial success of events, while illustrating that your organization supports educational opportunities in our community.

HOMELESS STUDENT SERVICES FUND

The Homeless Student Services Fund provides school supplies, clothing, food and crisis housing assistance for District 742 students experiencing homelessness.

IN-KIND CONTRIBUTIONS

LEAF relies on generous in-kind services to help promote annual events and fundraisers. LEAF in-kind sponsors are recognized in the same manner as our financial sponsors.

IMMERSION PROGRAM FUND

The Immersion Program Fund supports the Chinese and Spanish Immersion Programs in our schools.

LEGACY FUND

Gifts of \$25,000 or more, given over a period of up to 5 years, allow donors to support a specific activity or program, or can be given in the donor's name to a program or activity chosen through the grant process.

PAKRAT

The Partners And Kids Reading A-lot Together (PAKRAT) program encourages reading by providing books to elementary students. Plus, the PAKRAT Summer Roll and Read Program features a book bus that delivers the joy of reading to neighborhoods all summer long.

PAKCAT

The Partners And Kids Counting A-lot Together (PAKCAT) program encourages the development of math skills in our preschool students. PAKCAT materials are also included on the summertime Roll & Read bus.

PLANNED GIVING

A provision for a gift to LEAF through estate planning, life insurance and trusts provides a legacy of support to students for years to come. Planned gifts are arranged through the Central Minnesota Community Foundation by contacting the LEAF Executive Director.

RETIRED EDUCATORS CLUB FUND

Thanks to our generous retired educators, this fund exceeded the \$25,000 Legacy Fund level in 2018 and, with the support of over 125 retired educators continues to grow! As the fund grows, so grows the amount of grants given for academics, activities, arts, and athletics each year!

Thank you for considering a contribution to LEAF.

Visit leaf742.org to learn how you can make a difference for our entire community – especially District 742 students.

Special Events & Projects



LEAF special events and projects are **supporting academic, activities, arts or athletic programming** in District 742.

- Night of the Stars
- Adopt-A-Classroom Project
- Learning Renaissance
- Apollo Activities Golf Tournament
- Tech Athletics Golf Tournament



In Memory of...

LEAF lost two great friends and board of directors' members this past year. Gary Strandemo passed away on September 3 and John Wertz passed away in early December.

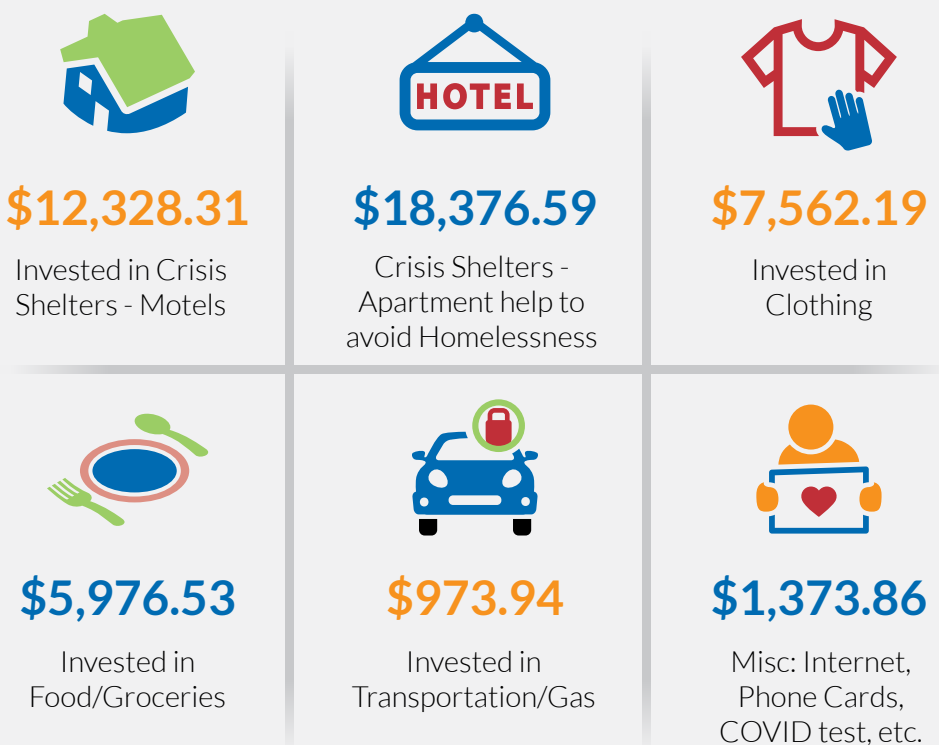
Gary was a retired doctor in St. Cloud who served on the LEAF board for 6 years. Gary and his wife Barb have been great supporters of LEAF and public education. Gary was also involved with many community projects and service to others, including helping those in need in the countries of Guatemala and the Dominican Republic.

John Wertz was a career educator in St. Cloud, spending most of his career teaching Social Studies at Apollo High School and was currently serving on the LEAF board of directors. John was in a motorcycle accident in the early 1970's and as a result was confined to a wheelchair for most of that career. He never let his handicap prevent him from being an active and engaged teacher and member of the community. He was a respected educator and well-liked by students and staff.

We mourn the loss of these two model citizens of our community.

LEAF Supports Homeless Youth in District 742

In 2020, LEAF provided over \$46,000 in grants to support students facing the daunting challenge of getting a quality education while facing homelessness. The diagram below shows the breakdown of those grants.



“Homework is hard. Imagine how hard it is without a home.”

2020 Memorial Gifts

- | | |
|---|--|
| Tolly & Karen Vollen
<i>In Memory of Benjamin Wahman Behme</i> | Gene & Mary Margaret Bjorklun
<i>In Memory of Lowell Olson</i> |
| Peggy Carlson & Chuck Nielsen
<i>In Memory of Hans Bodvarsson</i> | James Noonan
<i>In Memory of Lowell Olson</i> |
| Colleen & Bruce Hentges
<i>In Memory of Barb Carlson</i> | Dave & Sonja Strutz
<i>In Memory of LeRoy Pauley</i> |
| Pat & Cathy Mullen
<i>In Memory of Barb Carlson</i> | Gene & Mary Margaret Bjorklun
<i>In Memory of LeRoy Pauley</i> |
| Bruce & Colleen Hentges
<i>In Memory of Dave Dropp</i> | Bruce & Colleen Hentges
<i>In Memory of LeRoy Pauley</i> |
| Janet Gambirino
<i>In Memory of Tom Gambirino</i> | Vernon & Mary Ann Leitch
<i>In Memory of LeRoy Pauley</i> |
| Bruce & Colleen Hentges
<i>In Memory of Dan Gohl, Sr.</i> | Carol & Steve Howe-Veenstra
<i>In Memory of LeRoy Pauley</i> |
| Bruce & Colleen Hentges
<i>In Memory of Muriel Henry</i> | Bob & Sandy Burtness
<i>In Memory of Lowell Olson</i> |
| Peggy Carlson & Chuck Nielsen
<i>In Memory of Beulah Rose Hutchins</i> | Gene & Mary Margaret Bjorklun
<i>In Memory of Jerry Sales</i> |
| Pat & Cathy Mullen
<i>In Memory of Don Johnson</i> | Vern & Mary Ann Leitch
<i>In Memory of Jerry Sales</i> |
| Wally & Shari Pretzer
<i>In Memory of David Kunze</i> | Bruce & Colleen Hentges
<i>In Memory of Jerry Sales</i> |
| Gene & Mary Margaret Bjorklun
<i>In Memory of Bob Langrigan</i> | Jill & Jack Wahman
<i>In Memory of Jerry Sales</i> |
| Bruce & Colleen Hentges
<i>In Memory of Jerry Larson</i> | John & Judy Carlsted
<i>In Memory of Jerry Sales</i> |
| Gene & Mary Margaret Bjorklun
<i>In Memory of Jerry Larson</i> | Dave & Gloria Melby
<i>In Memory of Jerry Sales</i> |
| James Noonan
<i>In Memory of Jerry Larson</i> | Gene & Mary Margaret Bjorklun
<i>In Memory of Agnes Steil</i> |
| Jill & Jack Wahman
<i>In Memory of Jerry Larson</i> | Colleen & Bruce Hentges
<i>In Memory of Gary Strandemo</i> |
| Johnb & Judy Carlsted
<i>In Memory of Jerry Larson</i> | Pat & Cathy Mullen
<i>In Memory of Gary Strandemo</i> |
| Bruce & Colleen Hentges
<i>In Memory of Carolinn McConkey</i> | Barb Strandemo
<i>In Memory of Gary Strandemo</i> |
| Bruce & Colleen Hentges
<i>In Memory of Jim Milbery</i> | Bruce & Colleen Hentges
<i>In Memory of George Torrey</i> |
| Bruce & Colleen Hentges
<i>In Memory of Mike Neutzling</i> | Peggy Carlson & Chuck Nielsen
<i>In Memory of George Torrey</i> |
| Bruce & Colleen Hentges
<i>In Memory of Lowell Olson</i> | Bruce & Colleen Hentges
<i>In Memory of John Wertz</i> |

2020 Honorary Gifts

- | | |
|--|--|
| Beth Gauerke
<i>In Honor of Harrison & Alex Gauerke</i> | Gene & Mary Margaret Bjorklun
<i>In Honor of Mary and Ron Peters</i> |
| Susan Levinski
<i>In Honor of Emily & Owen Hammond</i> | Gene & Mary Margaret Bjorklun
<i>In Honor of Val & Phil Rogosheke</i> |
| Nicolyn Rajala
<i>In Honor of Gary Hansen, Art Teacher</i> | Peggy Carlson & Chuck Nielsen
<i>In Honor of Tech Class of 2020</i> |
| Gene & Mary Margaret Bjorklun
<i>In Honor of David & Sue Nass</i> | Peggy Carlson & Chuck Nielsen
<i>In Honor of Michael Trewick</i> |
| Mary Margaret & Gene Bjorklun
<i>In Honor of Tonci Pavkovich</i> | Zachary Jungles
<i>In Honor of Adalle Tweety</i> |

2020 LEAF Grants

ACADEMIC ENDOWED FUND GRANTS - SPRING

Spring (Restricted Legacy)	\$11,509.46
Contingency	\$500.00
Special COVID Grants/Spring 2020	\$2,800.00

ACTIVITIES ENDOWED FUND GRANTS - SPRING

Spring (Regular)	\$5,380.00
Spring (Restricted Legacy)	\$9,317.00
Fall (COVID-19 Related Grants)	\$21,600.00
Fall Contingency	\$1,000.00

NON-ENDOWED GRANTS GRANTS

Learning Renaissance Fund-a-Need	\$15,584.00
Adopt-a-Classroom	\$32,573.00
PAKRAT	\$16,541.00
PAKCAT	\$6,869.00
Night of the Stars Vouchers	\$6,248.00
Homeless Fund	\$46,251.45
Activities Participation Fund	\$189.00
Direct Flow-Through	\$6,500.00
Immersion grants/expenses	\$2,507.54
Tech Athletics - Golf	\$3,000.00
School Lunch Fund	\$1,738.00
LEAF Photo Contest Grant	\$500.00

Total 2020 Grants - \$190,607.45



STATEMENT OF FINANCIAL POSITION

Jan. 1, 2020 to Dec. 31, 2020

Income:

Public Support Contributions	\$627,604
Earned Income	
Special events, net of expenses	\$34,601
Investment Income	\$184,642
Total	\$846,847

Expenses:

Program Services Grants to District	\$207,189
Supporting Services Fundraising	\$21,348
Management & General	\$30,665
Total	\$259,202

Change in Net Assets	\$587,645
Net Assets Beginning of Year	\$1,442,088
Net Assets End of Year	\$2,029,733

2020 LEAF Endowed Fund Grants

ACADEMIC ENDOWED FUND GRANTS - SPRING

Spring (Restricted Legacy)	\$5,000.00	Schmitz Scholarship
	\$6,517.00	Immersion Program Grant
Spring COVID	\$1,000.00	Get Fit At Home
	\$1,800.00	Internet Hot Spots for District 742
	\$14,317.00	

ACTIVITIES ENDOWED FUND GRANTS - SPRING

	\$4,520.00	Tech Athletics
	\$1,836.00	Tech Football
	\$1,633.00	Apollo Activities
	\$1,300.00	South Activities
	\$9,289.00	

ACTIVITIES ENDOWED FUND GRANTS - SPRING

	\$750.00	Tech Girls Soccer
	\$785.00	Tech Track
	\$645.00	McKinley/ALC MAAP STARS
	\$670.00	North Community Action Day
	\$500.00	North "Where Everyone Belongs"
	\$375.00	Apollo/North Eagle FPS/CPS
	\$550.00	District Robotics - Gearheads
	\$430.00	Apollo Swim/Diving Team
	\$500.00	Tech HOSA Conference
	\$175.00	AVID Senior Trip
	\$5,380.00	

SPRING CONTINGENCY GRANTS

	\$500.00	Tech Speech to Harvard
Fall (Regular)	\$0.00	Saved for Fall COVID

ACADEMIC & ACTIVITIES COVID-19 GRANTS FROM ENDOWED FUND - FALL

\$10,000.00	Headphones for Distance Learning
\$5,000.00	Curricular Supplies Related to Distance Learning
\$1,500.00	Early Childhood Education Program Needs
\$750.00	North Jr. High "Making Positive Connections During Distance Learning"
\$500.00	North Jr. High "Making Positive Connections During Distance Learning"
\$850.00	Tech Boys Soccer Coach
\$1,500.00	Apollo Boys Basketball Uniforms
\$1,500.00	Tech Boys Basketball Uniforms

FALL ACADEMIC CONTINGENCY

	\$500.00	Lincoln Elementary "Dress Up Day" support
Total 2020 Endowed Fund Grants	\$51,586.00	

Total 2020 Grants \$190,607.45



George and Shirley Torrey:

A Lasting Legacy in Support of Public Education

George and Shirley Torrey were long-time supporters of LEAF and in particular, opportunities for students to be involved in the student activities programs in District 742. George was one of our closest advisors when LEAF began in the early 1990's and served two terms on the LEAF board of directors. In 2002, the Torreys made a \$65,000 gift that enabled LEAF to reach our \$140,000 goal and save the junior high activities program, which had been cut by the school board during difficult financial times for District 742. The District may never have gotten that program back if the Torreys hadn't stepped in. In 2008, the Torreys made a \$100,000 pledge over 5 years to LEAF as part of the "15th Anniversary Campaign." These funds were used to establish a LEAF Legacy Fund in their name and provides grant assistance through our Activities Endowed Fund.

In 2012 George signed a "Letter of Intent for a Future (Estate) Gift to LEAF". Shirley passed away in 2018 and George passed away in June of 2020. Although their Letter of Intent was not a legal document, just an indication of his intent, we were informed by the Bremer Trust department that we would receive a \$400,000 gift as part of the Torreys' Estate Plan.

This gift has been deposited into the LEAF Activities Endowment with the Central Minnesota Community Foundation and will mean that we will be able to grant an additional \$20,000 each year to activities programs in District 742! It will also increase LEAF's total endowed funds from over \$1.4 million to over \$1.9 million and enable LEAF to make \$90,000 in grants each year, just from LEAF endowed funds. Because of the generosity of individuals like the Torreys, LEAF's endowed fund and our total impact on education in District 742 continues to rapidly grow!

The Torreys have also financially supported other nonprofits in the St. Cloud area. Through their generosity to LEAF, many students will receive opportunities that they otherwise would not have had. George was never shy about us letting the community know when he had made a significant gift to LEAF. He believed that if others knew the importance he placed on education and his commitment to support LEAF, perhaps they would also consider giving at whatever level they could. Consider the Torreys' gift and how you could benefit the community by leaving a legacy gift.

2020 LEAF Board of Directors

Tim Beck –Treasurer
Accountant-CliftonLarsonAllen LLP

Peggy Carlson –Vice President
*Community Volunteer
Tech High Alumnus*

Abdi Daisane
Business Owner –Blooming Kids Childcare

Dan Edelbrock
Commercial Banker, U.S.Bank

Cindy Harner
RSM-Mars Petcare

Peter Hamerlinck
Apollo Activities Director

Bruce Hentges – Executive Director
Retired Educator

Lori Johnson
Clearview PTA Chair, Parent Volunteer

Patrick Kruchten
Certified Financial Planner, Proviant Group

Pat Krueger – Secretary
Retired SCSU Admissions Director

David Langerud
Tech Activities Director

Kathy Lyerly
*Retired Educator, District 742 Youth Services,
Project Coordinator*

Sara Martini
Media Specialist, Westwood Elementary

Jim Michaud
Retired Activities Director/Educator

Bruce Mohs
Retired Educator and School Board Member

Laura Pfannenstien
CFO-Brutger Equities, Inc.

Aric Putnam
College Professor

Elizabeth Reisinger– President
*Freelance Writer
Communications Professional*

Chad Roggeman
*District 742 Parent/Attorney
Rajkowski Hansmeier, Ltd*

Steve Schiller
Business Owner

Randy Schoenrock
Elementary Teacher

Greta Stark-Kraker
CMCF, Director of Donor Relations

Eric Vollen
Marketing and PR Manager, Catholic Charities

John Wertz
Retired Educator

LEAF welcomes new board members:
Fardowsa Iman, Diane Moeller,
Hani Omar-Jacobson, Andrea Preppernau
and Rob Voshell



Contact our executive director (320-253-5780 or bchentges@gmail.com) if you are interested in setting up a Legacy Fund to support public education.

THANK YOU TO OUR DONORS

Thank you to all our donors who gave so generously in 2020. Your continued support of LEAF's mission confirms the strength of our vision and our community's commitment to the students of District 742 and a world-class education. The following donations were received during calendar year 2020.

\$400,000+

Estate of George & Shirley Torrey

\$10,000 - \$49,999

Orn & Mary Bodvarsson
Peggy Carlson & Chuck Nielsen
Paul & Joanne Dorsher
Karel & Mike Helgeson Family Fund
Morgan Family Foundation
Dr. John and Sue Weitz

\$2,500 - \$9,999

Anonymous Donor
Central Minnesota Response Fund
CMCF COVID Grant #1
CMCF COVID Grant #2
CMCF Anonymous Donor
Al Dahlgren, Once Upon a Child
Eckblad-Williams Community Fund
Don Helgeson & Sue Shepard
Suzanne and James Kelleher
Kristin & Jay Portz
Wayne & Juli Schluchter Fund of the CMCF
St. Cloud Area Golden Gloves Boxing, Inc
City of St. Cloud Block Grant
United Way of Central MN

\$1,000 - \$2,499

Ameriprise Match
Bernick's Beverage & Vending
Dick & Mimi Bitzan
Bruce & Colleen Hentges
Amy Jensen
The Sharon Jensen Family
David & Pat Krueger
Dorrie & Scott Larison
Liberty Bank
Patrick & Cathy Mullen
Drs. Ted & Jane Peterson
The Murphy Podawiltz Family Fund
Proviant Group
Mike & Janet Reagan
Michael Schlough & Rebecca Bastien
St. Cloud Education Association
St. Cloud Morning Optimist Club
Phil & Nancy Sturlaugson
Pat Welter & Patrick Henry
John Wertz & Margaret Schlagen

\$500- \$999

Joan & Michael Abfalter
Caroline Anderson
Rick & Marianne Arnzen
Bernice Berns & Terry Iverson
Jim & Ginny Bisek
Gene & Mary Margaret Bjorklun
Bremer Bank
Nancy & Kevin Brennan
Sarah Budenske
Bob & Sandy Burtness
Mary Croat
Joyce & Dennis Hummel
Bob & Chris Inkster
International Precision Machining
JLG Architects
Dr. Curtis & Lori Johnson
Fred Johnson
Kiwanis Club of St. Cloud

Bill & Phyllis Lacroix
Vernon & Mary Ann Leitch
Life Church
Miller Architects & Builders
Steve & Melanie Minkler
Vicki & Lee Morgan
North Risk Partner
James O'Neil
Jim & Bev Pehler
Jeff & Stephanie Peterson
Todd Pieper & Heather Pieper-Olson
Wally & Shari Pretzer
RBC Foundation
Elizabeth & Eric Reisinger
Marilyn Savage
Lynn & Bill Schnettler
Ron Schoenfelder
South Parent Association
St. Cloud Orthopedics
Richard & Elizabeth Svee
Douglas Unglaub
Jerry & Connie Von Korff
Tara Winchester

\$250 - \$499

All Star Trophy & Awards, Inc
American Family Insurance Match Program
Dan Anderson
Tim & Kathleen Asgrimson
Darlene Backes
Lisa Bale
Susanne Barkalow
Mark & Angie Benson
Michael & Anmdrea Bobick
Maggie Brossoit
Theodore Carlson
Donna Ching
Evans "Chip" Connelly
CWMF Corporation
Jane Daffinrud
Michael & Kendra Dando
Tami DeLand & Steve Hansen
Dwayne & Cindy Dockendorf
Janet Dolan
Tom Dolan
Fraternal Order of Eagles Ladies Auxiliary #622
Don & Diane Farleo
Bob & Elizabeth Feigh
Jill Fox
Dr. Robert Gardetto DDS
Tanya & Faust/William Gertz
Art & Barb Grachek
Kathryn & Paul Gray
Cindy Harner
Heartland Glass Co, Inc
Sandra Henley
Glen & Mary Hentges
Dana & Mike Hoffmann
Dave & Deb Holder
James & Kelly Hover
Carol & Steve Howe-Veenstra
Peter Johnson
Bradley Kothman
Jamie LaBree
Janna & Mike LaFontaine
Clyde & Connie Lewandowski
Gary & Jane Marsden
Doris Matter
Janet & Paige McConkey
Steven McCullar
MCI Carpet One
Jim & Mary Michaud
Tom & Heidi Miller
Minnwest Bank
Joe Mullen
Paul & Jamie Muller

Tom Muller
Nancy & Donald Oestreich
Peters Body Shop Ince
Doug & Jerilyn Petersen
Laura & Jeff Pfannenstien
Aric & Laurie Putnam
Teresa Ries & Ted Takala
Bernie Rolle
Michelle & Steve Sauer
Paulette & Steve Schwegman
Jeff & Linda Skumautz
Charlotte Stephens
Carolyn Himanga Stewart
Dave & Sonja Strutz
Kim Thooft
Joyce & Tony Tillemans Fund of CMCF
Ione & Jerry Torborg
Dianne Tuff & Murdoch Johnson
Kirsten & Reuben Wagenius
Gordon Wagner
Linda Waring
Scott Wilcox
Jean & John Wittrock

\$100 - \$249

All Star Nutrition
American Family Insurance, Ehlinger & Associates
Anonymous
Linda & Floyd Ayers
Anne Ayres
Marsha & Steve Baisch
Tricia Bigaouette
Peggy Billings
Bruce & Julie Busta
Elaine Fuller Carter
Jeff Condon & Brandi Ranallo
Dan & Elaine Cotton
Karen Davenport
David Dolan
Bob Domek
Kermit & Betty Eastman
Michelle Edwards
Rose Ford
Daniel Gallagher
Rob Galler & Rachel Melis
Jerry Gerads & Carol Weiler
Philip Grossman
DeAnn Halvarson
Tyler & Joyce Hamerlik
Jane Heath
Elizabeth Heffernan
Brace Helgeson
Steve & Michele Heller
Bernadine Hennek
Karen & Chuck Henneman
Patrick Henry
Pat Hill
Sandeep Holay
Mike & Wendy Holman
Terry & Lori Humbert
Patti & Bob Imholte
Dr. Rolf and Virginia Jacobson
Willie & Tamara Jett
Icephine & Robert Johnson
Ruth & Mike Johnson
Bonnie & Brian Kay
Ken & Sally Kelsey
Lisa Kirkbride
Chad Kraker & Greta Stark-Kraker
Bill Kreul
Juliana & Alex Krueger
Nick Krueger
Karen Kruse
Leach Financial Services, LLC
Karyn Lombard
Carol & Jerome Loomis

Micaelene Lucia
William & Angela Luksetich
Kathy & Dennis Lyerly
Amy Mayer
Jerry & Maureen McCarter
Mehdi
Dave & Gloria Melby
Joseph Melcher
John Miller
Diane & Ralph Moeller
Bruce Mohs
Jane & Dennis Munson
Susan Nelson
Sandy Neutzling
James Noonan & Shawn Gombos
Bob & Marilyn Obermiller
Ron & Myrna Ohmann
Marv & Ione Pearson
John & Jannine Provizino
Nikki Rajal
Greg & Janet Reigstad
Scott & Reyne Roeder
Rosemary & Frank Roehl
Phil & Val Rogosheske
Judy & Luther Rotto
John & Kris Scharenbroich
Jerry Schnabel & Linda Nistler-Schnabel
Michael Shouldice
St. Cloud Refrigeration
Tom Stavros
Ms. Marcia Summers
Dan Swanson
Barb Tillemans
Jack & Suzie Toffey
Rois Traut & Mary Barron-Traut
Bobbi Trewick
Catherine Turner
Mark & Judy Twomey
Scott & Tamara Underwood
Charles & Carol Vick
Tolly & Karen Vollen
Katherine Voshell
Jill/Paul Melby/Weitzel
Lonny & Carol Wild
Sue & Tom Williams
Dennis & Jo Ann Wilson
Neighbors of Dan Wolgamott
Sally Wong
Jeanne & Thom Woodward

Up To \$100

John & Lindy Anderson
Anonymous
Rosanna Backen
Jeffrey Baird
Ken & Tomoko Rebeck
Jenifer Bibeau
Martha Bunde
John Burgeson
Chris Carlisle
Judy & Duane Carlson
John & Judy Carlsted
Diane Christman
Justin Clemens
Kathryn Dahlberg
Mary Davis
Jeffry Davenport
Mary A. Davis
Dan Edelbrock
Walt & Deanna Erickson
Daniel Fark
Janet Gambrino
John Gareth
Beth Gauerke
Thomas Gauerke
Michelle Goenner
Peg & Craig Gorecki

Marcia Handahl
Dan Hollenhorst & Juliana Elchert
Mark & Julie Huseth
Karen & Jerry Ingeman
Dane Johnson
Don & Sandy Johnson
Zachary Jungles
Jim & Cindi Kaiser
LeeAnn Kuntz
Janet & Jerry Larson
Glen Lauer
Nicole Lavo
Barbara Lee
John & Geraldine Lenoix
Susan Levinski
Paul Lewis
Jen Loch
Sara Martini
Gary & Ione McCarney
Sarah McCarty
Mike McGuire
Jean Michael
Jerome & Judy Miller
Bruce & Judy Moberg
Dicke & Bev Mowe
Jon & Mardi Noyes
Brian Nutter
Patricia Oberle
Joy Ottem
Jennifer Paulsen
Hannah Peters
Sheila & Rich Pulju
Bernadette & Geoffrey Quist
Harper Radlec
Katherine Ramundt
Cheryl & Keith Redmond
Carol & Sherwood Reid
Virginia Riser
Chad Rogeman
Gene & Gayle Roggeman
Paula Roggeman
Jerry & Donna Sales
Connie Sandmann & Mark Scholer
Mark & Cathy Sauer
Jayne Greeney Schill
Nancy Schmitt
Jerome Schroden
Jeff & Roemary Schwedes
Daniel Shannon
Ann Sieben
Cynthia Simson
Amy & Justin Skaalrud
Jan Sorell
H Keith Stinson
Tomas Stoffel
Maggie & Lynn Stoterau
Marcia Summers
Larry & Ruth Sundby
Audrey Taatjes
Karin Tellekson
Char Thelen
Benjamin Thompson
Kae Traxler
Joanne & Jason Treb
Dave & Janice Vierzba
Roger Huyink & Gretchen Voigt
Jill & Jack Wahman
Sheila Walker
Lisa Wannebo
Don & Jan Watkins
Barry Water
Bob & Patricia Werschay
Stephen & Carol White
Leona Wieland
Sandra Williams
Mike & Julie Zniwski

